

USAGE OF ELECTRICAL APPLIANCES

CONTENTS

COMMON THE FACILITIES

TV	2
AIR CONDITIONER	3
HEATER AND FAN	4
HUMIDIFIER	4
FOOT MASSAGER	4
MICROWAVE / OVEN / TOASTER . . .	5
SHARED LAUNDRY	6

SINGLE ROOMS EXCEPT ROOM 212

INDUCTION HEATING	7
WASHING MACHINE	7

SINGLE ROOM 212 ONLY

INDUCTION HEATING	8
-----------------------------	---

COMMON THE FACILITIES

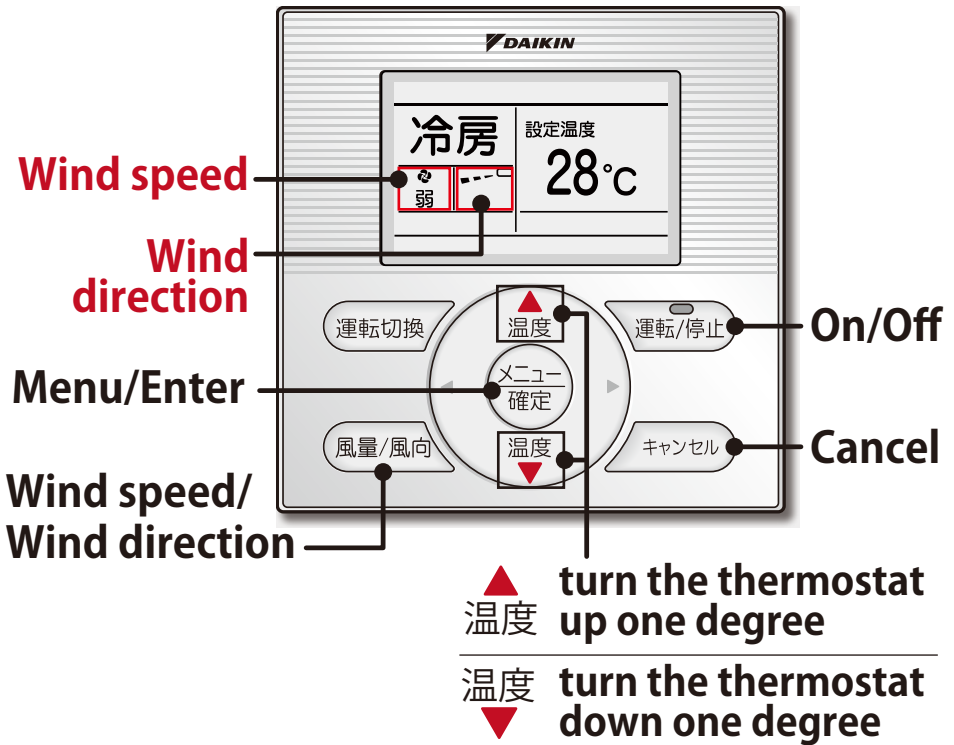
TV



AIR CONDITIONER

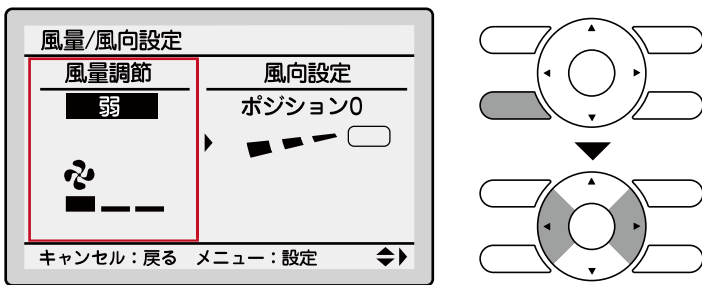
The air conditioning is collectively managed in this building, heating and cooling cannot be switched freely by the guests.

空調は集中管理しておりますので、冷暖房設定は切替いただけません。

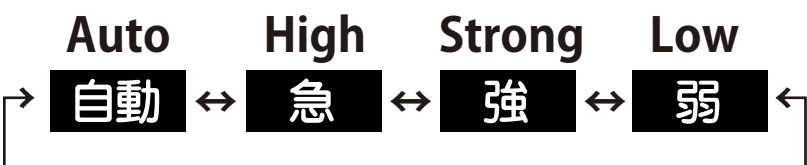


Wind speed

- ① Select “Wind speed setting 風量”.



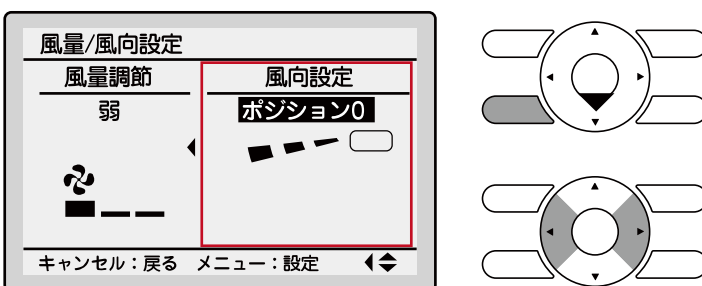
- ② Press “▲▼” to select the desired speed.



- ③ Press “Menu/Enter メニュー / 確定” to confirm the setting.

Wind direction

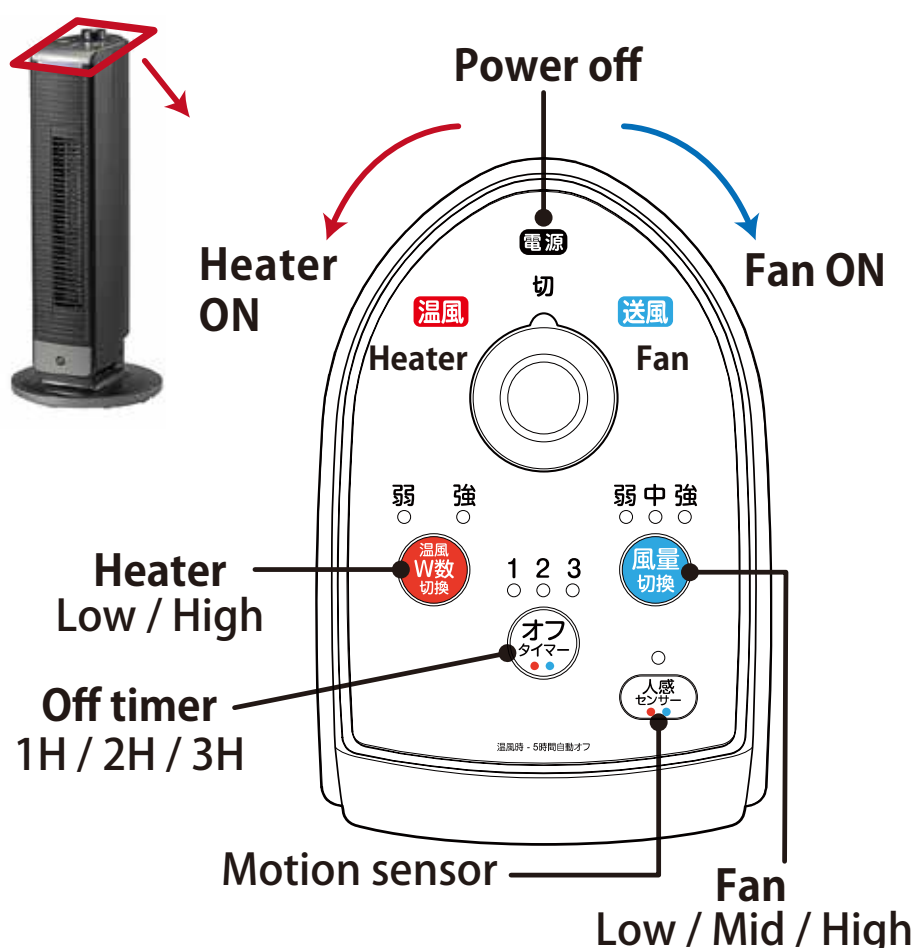
- ① Select “Wind direction setting 風向”.



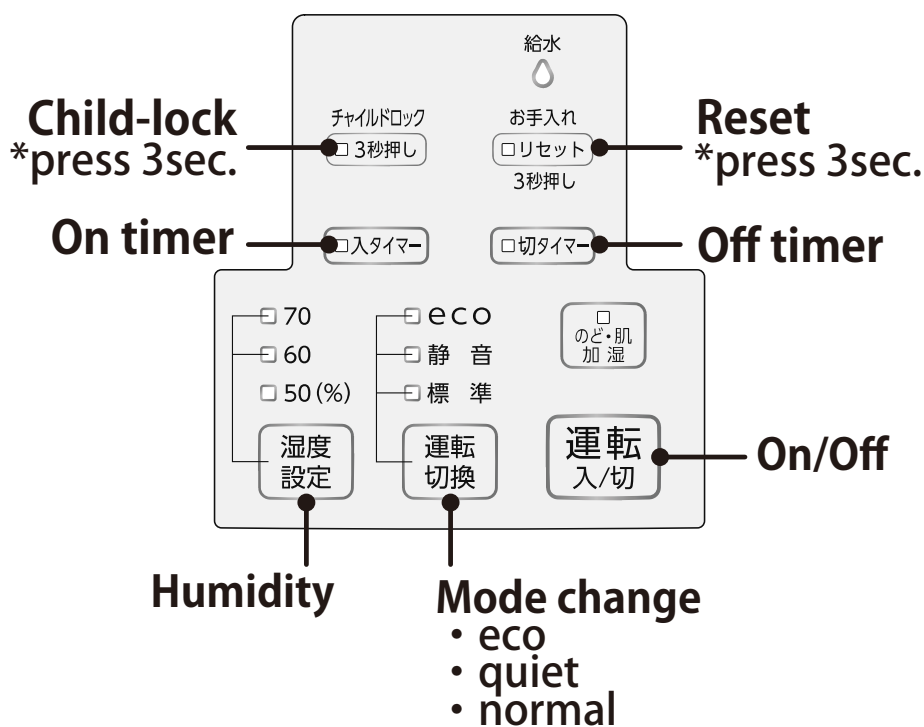
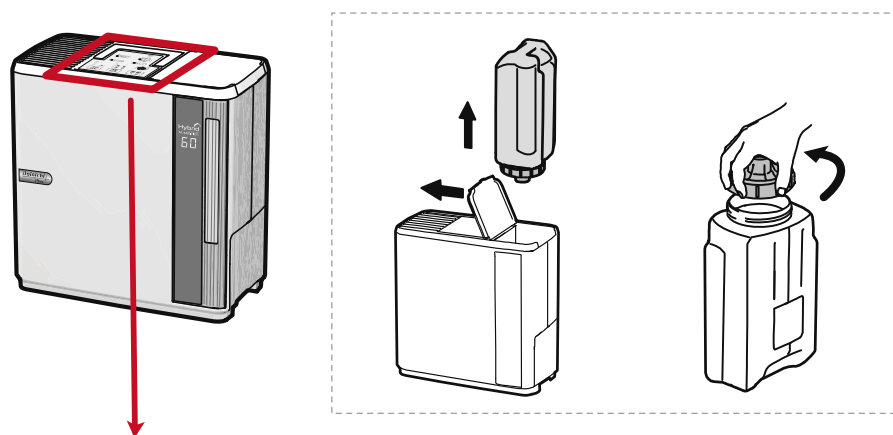
- ② Press “▲▼” to select the desired direction.

- ③ Press “Menu/Enter メニュー/確定” to confirm the setting.

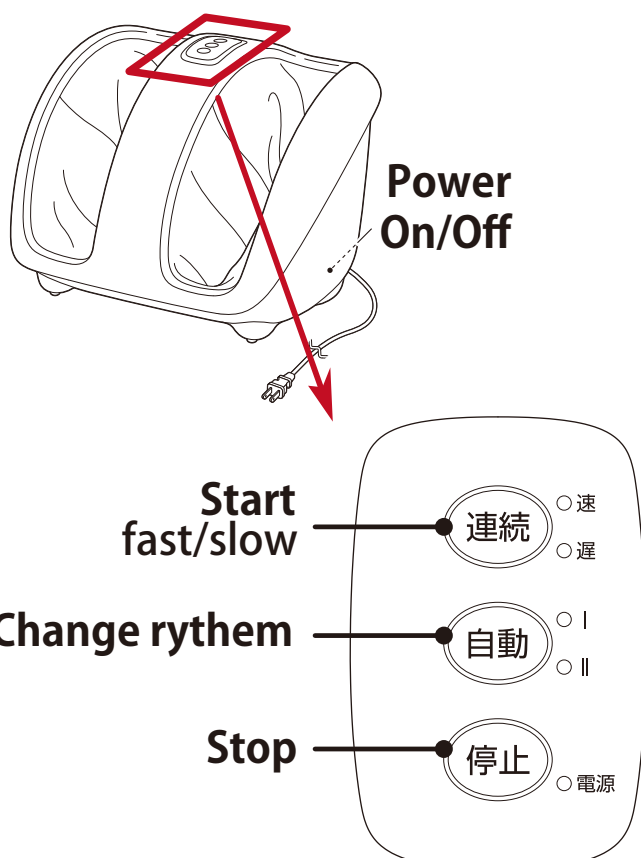
HEATER AND FAN 送風機能付ファンヒーター



HUMIDIFIER 加湿空気清浄機



FOOT MASSAGER フットマッサージャー



MICROWAVE / OVEN / TOASTER

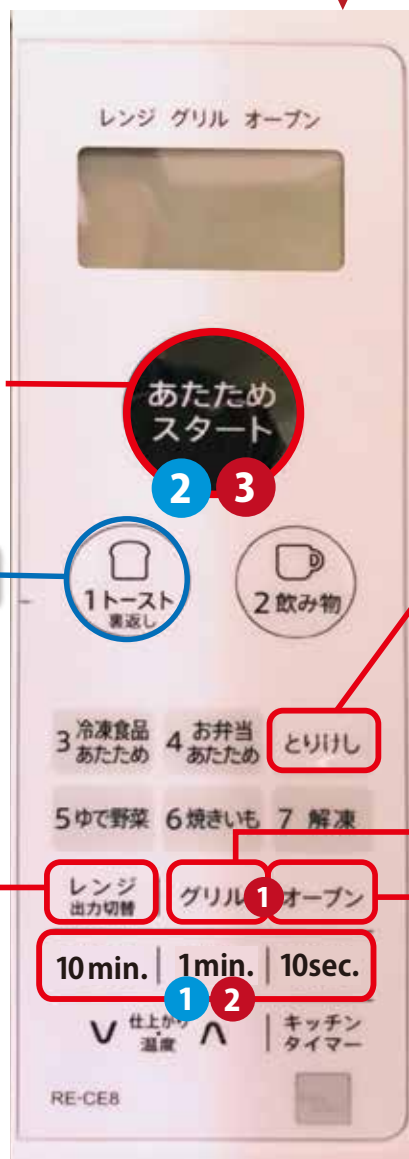
How to use the MICROWAVE:

- 1 Choose the amount of time by pressing the time buttons. (Ex. 2 minutes = Press the 1 min. button 2 times)
- 2 Press the WARM START button to start heating. Press CANCEL to stop early.

You can choose the matching button to heat these items.
Heating time is automatic.

1: Toast / 2: Drink / 4: Bento Box /
5: Steamed vegetables
For frozen items, please press 7: THAW

! Please do not use the black square plate when microwaving.
温めの際には、黒い角皿は使用しないでください。



Warm Start



You can toast!

Press the button twice to toast two pieces of bread.

Cancel

**TOASTER-GRILL
OVEN**

**Change
power level
(watts)**

How to use the GRILL or OVEN:

- 1 Choose the TOASTER-GRILL or OVEN button.
- 2 Set the time. (Ex. 30 minutes = Press the 10 min. button 3 times)
- 3 PRESS WARM START button to start heating. Press CANCEL to stop early.

SHARED LAUNDRY コインランドリー

There is a coin laundry in front of the elevator on the 1st floor.
1階にコインランドリーがございます。



***Please check the drying time and do not leave your clothes unattended as other guests will be using the machine. If the clothes are left in the drying machine, we may take them out.**

※他のお客様もご使用になられますので、終了時間を確認いただき、放置をされないようお願い致します。
乾燥機に入ったままの場合、取り出させて頂く場合がございます。

INDUCTION HEATING IHクッキングヒーター



HOW TO USE

- 1 Please put the cookware on the heating area before turning on the Induction Cooker.
- 2 Once you turn on the cooker, turn on the heating to adjust the heat temperature to: High or Low.

Please make sure to turn on the fan in the kitchen when cooking. Cooking without the fan may cause the fire alarm to go off.

WASHING MACHINE 洗濯機

HOW TO USE

- 1 Press Power ON button.
- 2 Put the one detergent ball into the drum.
- 3 Put the clothes into the drum.
- 4 Press Start button.
- 5 When the washing is completed, the machine is automatically stopped with buzzer sounds.
- 6 Power off.



Laundry Detergent

- Please use one detergent ball for one time.
- Please be sure to put in the detergent ball before putting in the clothes.

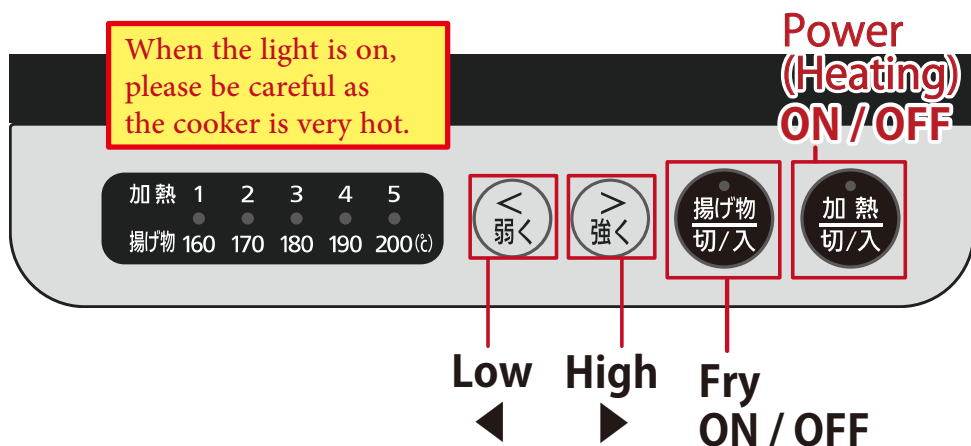


Caution 1 ball for 1 time

※ Throw the detergent gel ball into the washing machine as is. Do not break it open.

SINGLE ROOM 212 ONLY

INDUCTION HEATING IH クッキングヒーター



HOW TO USE

- 1 Please put the cookware on the heating area before turning on the Induction Cooker.
- 2 Once you turn on the cooker, turn on the heating to adjust the heat temperature to: High or Low.

Please make sure to turn on the fan in the kitchen when cooking. Cooking without the fan may cause the fire alarm to go off.